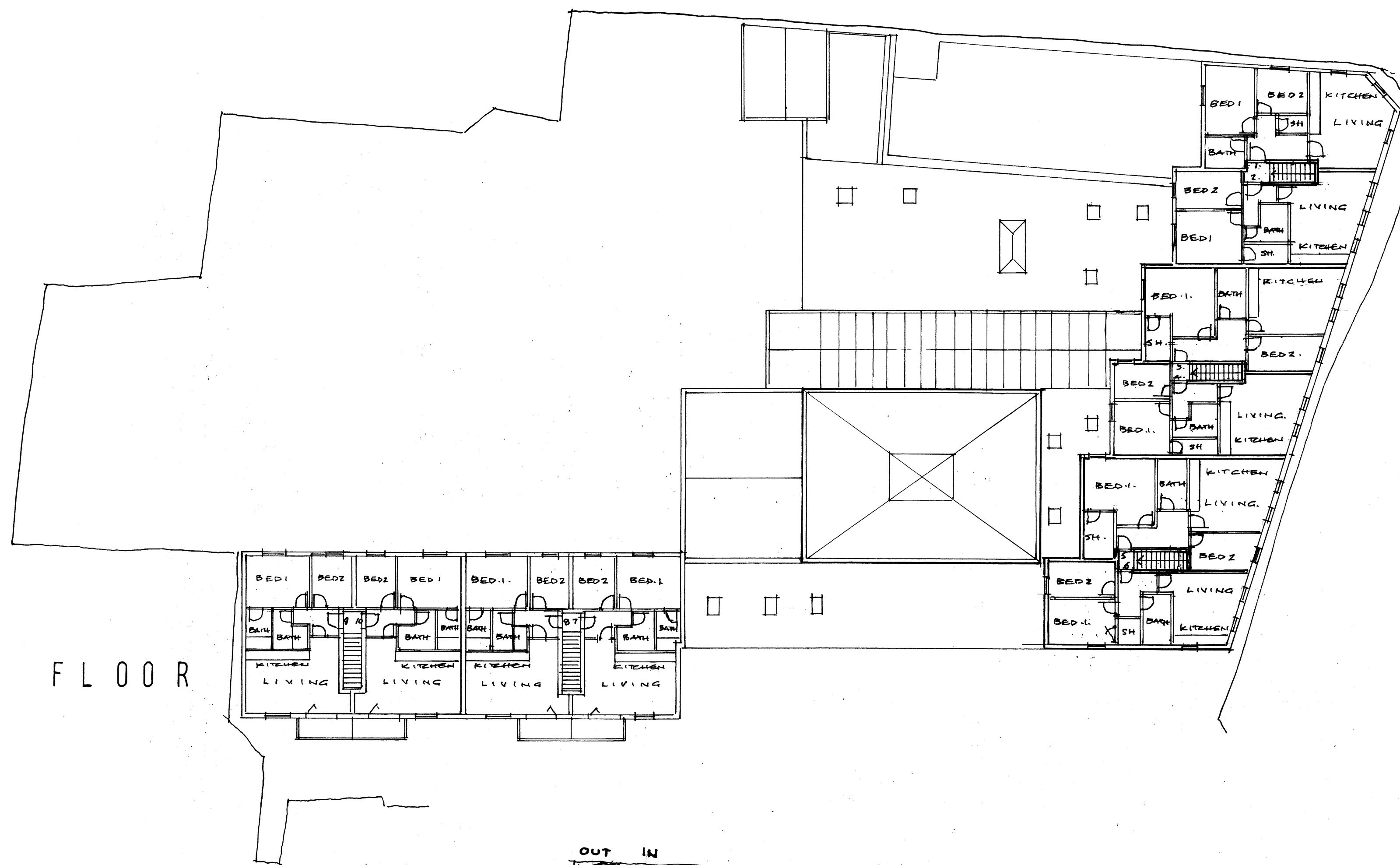
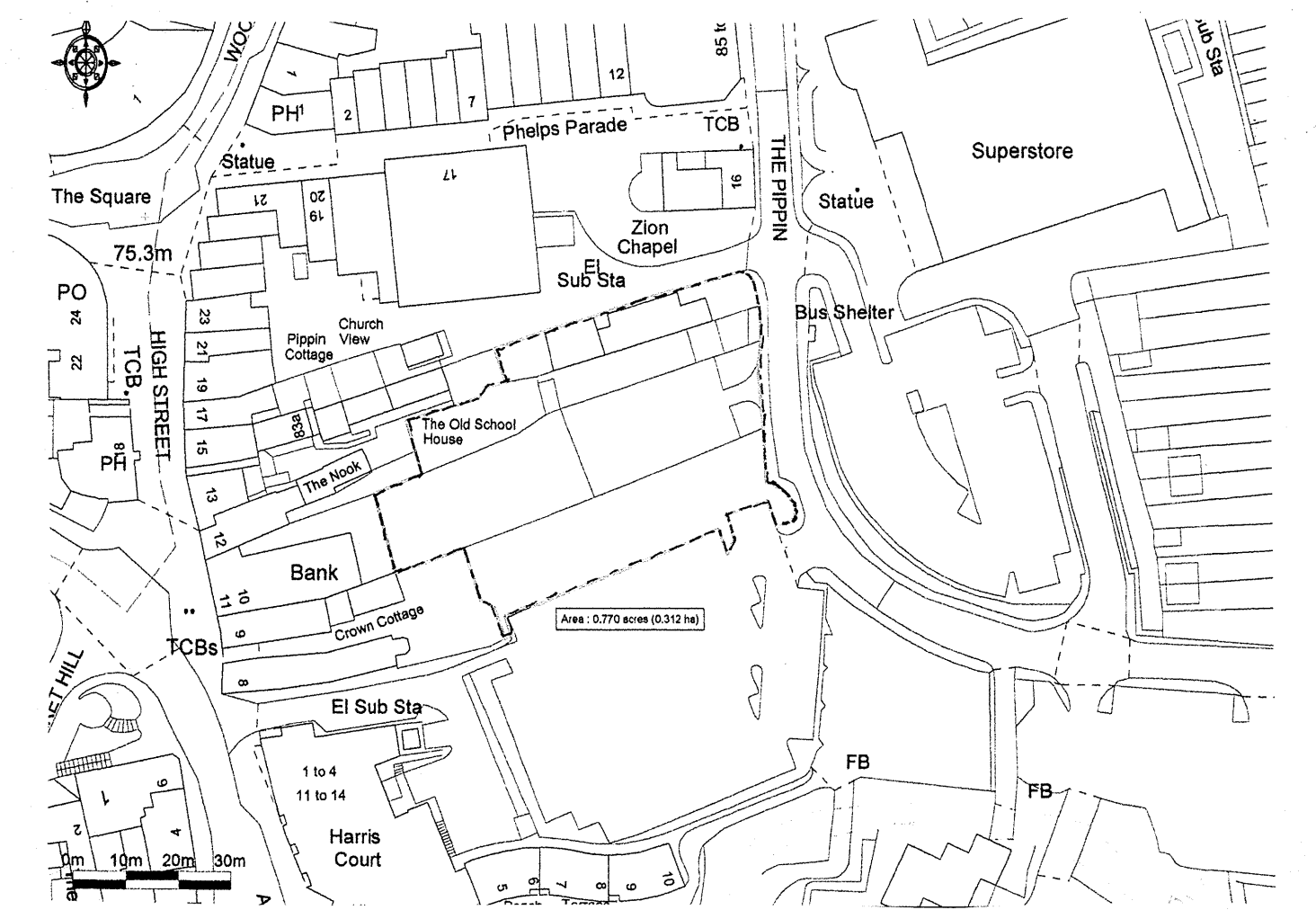
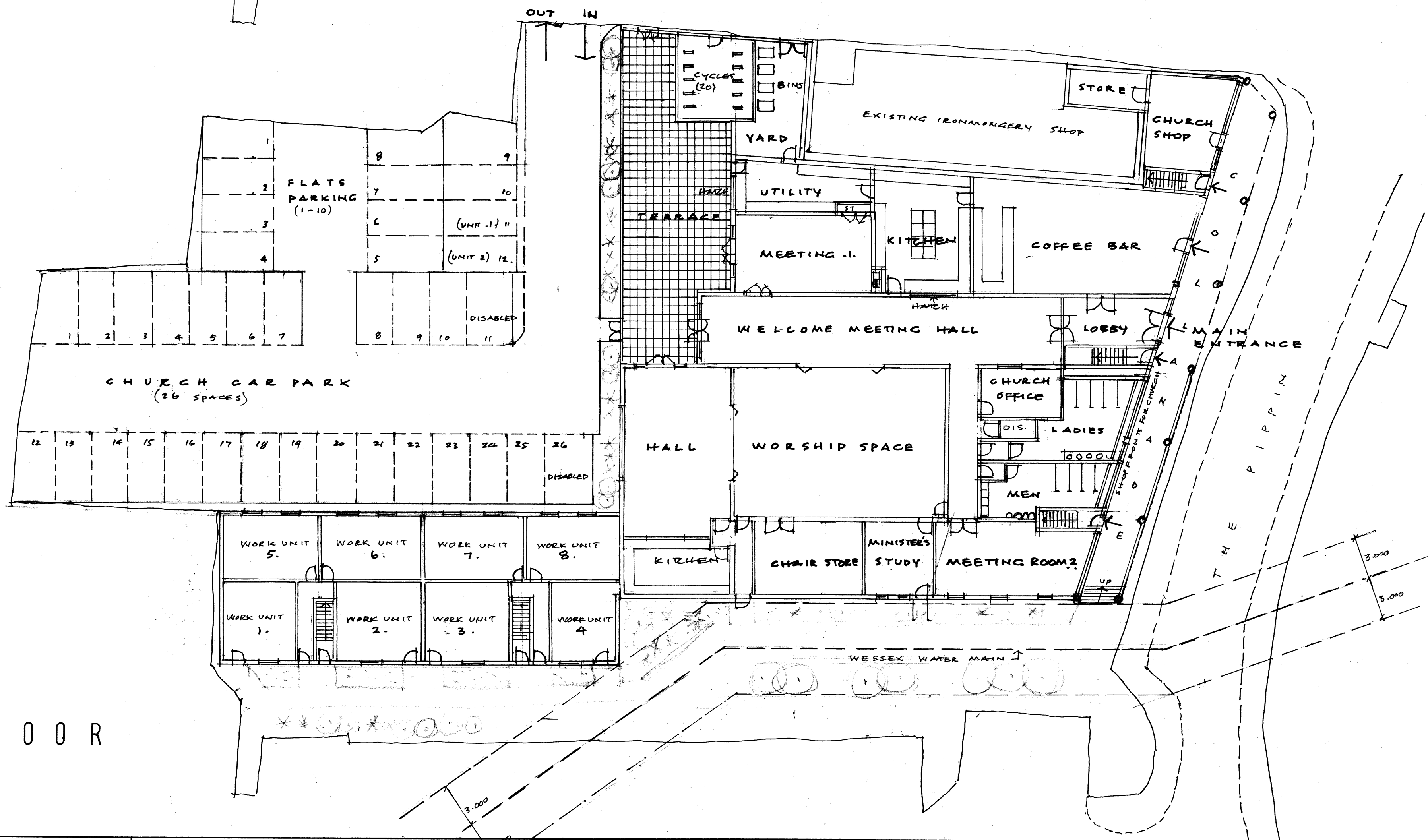


FIRST FLOOR



GROUND FLOOR



LOCATION PLAN 1:1250

DRAWING NUMBER <b>8050/16795</b>	REVISIONS
SCALE 1:200	
DATE 18.7.2018	
DRAWN DB-S	

CALNE BAPTIST CHURCH

PROPOSED NEW CHURCH DEVELOPMENT  
AT THE PIPPIN, CALNE

F. W. BERTS FORD-SMITH & PARTNERS  
CHARTERED ARCHITECTS  
THE CHASE, HIGH BARNEDOWN  
BATHBASTON BATH BA1 7JZ