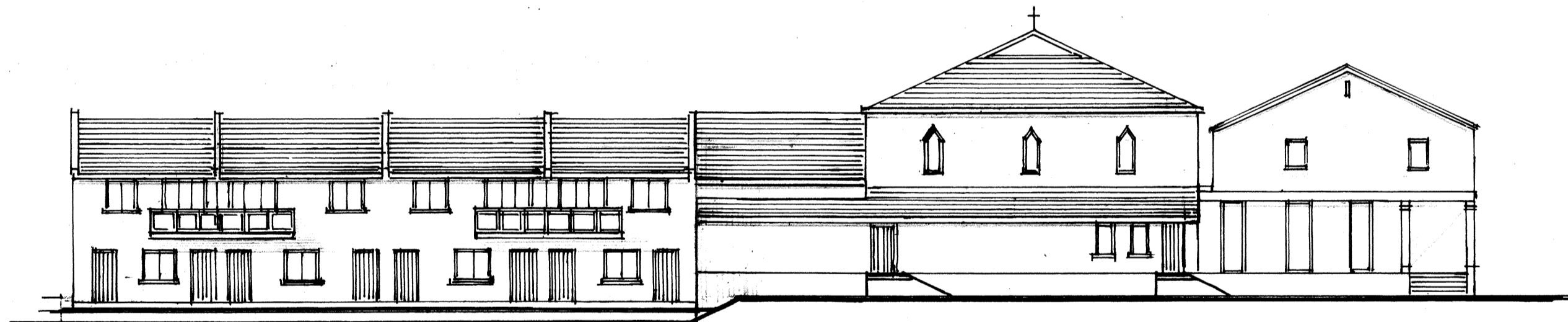


E A S T E L E V A T I O N



S O U T H E L E V A T I O N

DRAWING NUMBER  
8050/16797  
SCALE 1:200  
DATE 18.7.2018  
DRAWN DB-T

REVISIONS

C A L N E B A P T I S T C H U R C H

PROPOSED NEW CHURCH DEVELOPMENT  
AT THE PIPPIN, CALNE

F. W. BEESFORD-SMITH & PARTNERS  
CHARTERED ARCHITECTS  
THE CHASE, HIGH BANNERDOWN  
BATTELSTON BATH BA1 7JZ